



Instructions for Installing TF Server Conversion Kits

INTRODUCTION

This instruction covers the replacement of parts to convert old style TF Servers to the new style servers.

KIT CONTENTS

ITEM	PART NO.	QTY.	DESCRIPTION
-	40061.0000	-	Conversion Kit 1.0 gal Mechanical Sight Gauge w/o Base (Includes items 1 - 5)
-	40061.0001	-	Conversion Kit 1.0 gal Mechanical Sight Gauge w/ Base (Includes items 1 - 13)
-	40061.0002	-	Conversion Kit 1.5 gal Mechanical Sight Gauge w/ Base (Includes items 1 - 13)
-	40061.0003	-	Conversion Kit 1.5 gal Mechanical Sight Gauge w/o Base (Includes items 1 - 5)
-	40061.0004	-	Conversion Kit Digital Sight Gauge w/ Base (Includes items 4 - 13)
-	40061.0005	-	Conversion Kit Digital Sight Gauge w/o Base (Includes items 4 & 5)
1	39082.1001	1	Shroud Assy, 1.0 Gal.
	39082.1000	1	Shroud Assy, 1.5 Gal.
2	39143.0001	2	Washer
3	39083.0000	1	Shroud Cap
4	39084.0000	1	Faucet Guard
5	40060.0000	1	Faucet Assy, Mechanical Sight Gauge
	40060.0050	1	Faucet Assy, Digital Sight Gauge
6	38929.0000	1	Stand, Server
7	38930.0000	1	Base Plate
8	35016.0001	3	Insert
9	39443.0000	4	Pad, Adhesive
10	44010.0000	4	Screw, PH #8 x .50" (Base Plate)
11	39617.0000	3	Screw, PH #6 x .75" (Insert)
12	38931.0000	1	Drip Tray
13	38932.0000	1	Grate, Drip Tray

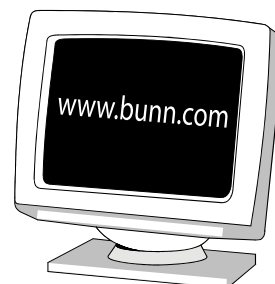
See Reverse for Installation Instructions

BUNN-O-MATIC CORPORATION

POST OFFICE BOX 3227

SPRINGFIELD, ILLINOIS 62708-3227

PHONE: (217) 529-6601 FAX: (217) 529-6644



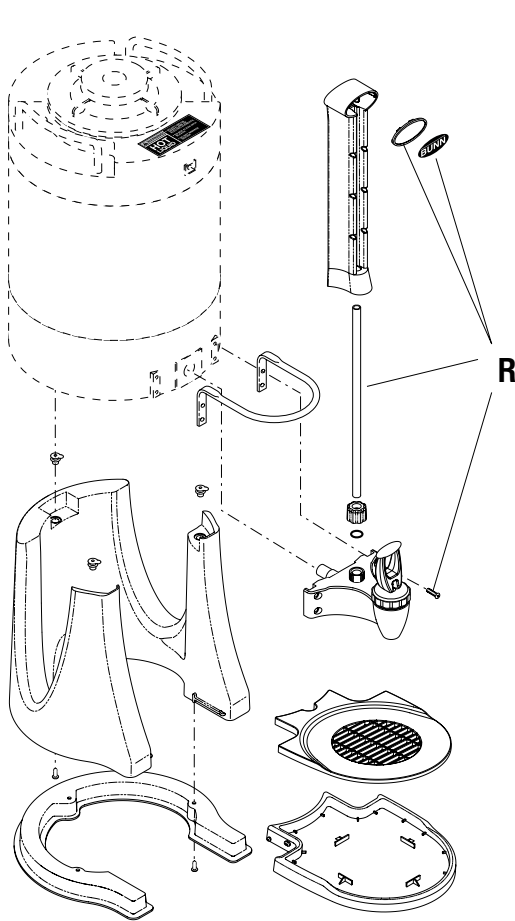
INSTRUCTIONS TO INSTALL THE CONVERSION KITS

Remove all parts shown in Fig. 1 as they pertain to your server and the Conversion Kit being installed. Parts labeled **R** must be retained for installation with the new configuration. All others may be discarded.

NOTE: Old style Server Stand and Drip Tray will not work with the new style Faucet.

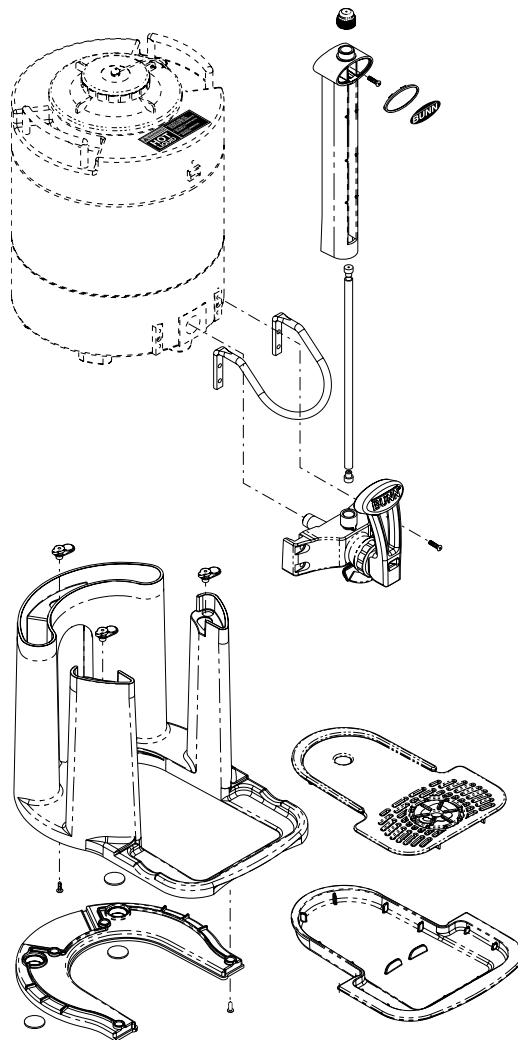
1. Remove the old style Server Stand where applicable.
2. Remove the Bottom Cover from the Server to gain access to the Faucet Hose and Clamp.
3. Install the new Faucet Assy along with the new Faucet Guard to the Faucet Hose and secure with Clamp. Install four Screws (R) previously removed to secure Faucet and Guard to Server. Replace Bottom Cover.
4. Install new Washers (2) into each end of the Sight Glass Tube (R).
5. Assemble remaining Sight Gauge parts.
6. Assemble and install new style Server Stand and Drip Tray.

CAUTION: *Clean and Sanitize your Server before using and on a Daily basis!*



P3869

Old Style TF Servers



P3870

New Style TF Servers