

Replacement of Water Tank in JDF-4S

Step 1: Disconnect water source from the back of the cabinet.

Step 2: Remove side, back, and top panels on unit. Remove front splash panel in front located under door. Set screws and panels aside.

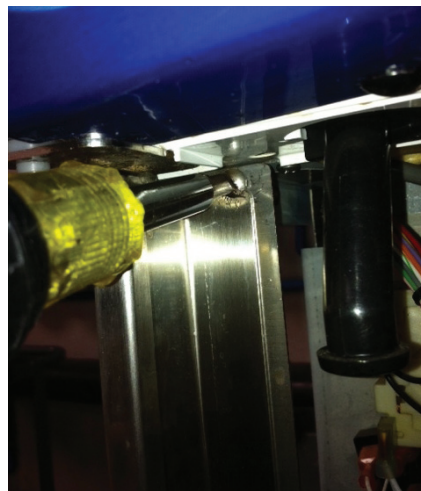
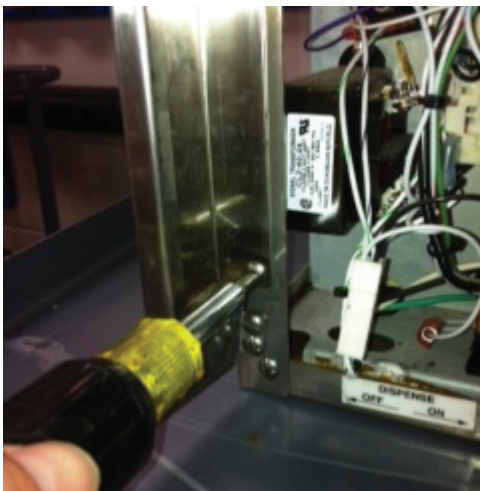
Step 3: Separate the drain tube from the cabinet and bracket located behind the splash panel. Drain all water out of water tank.

Step 4: The cabinet must be removed from the unit as follows.

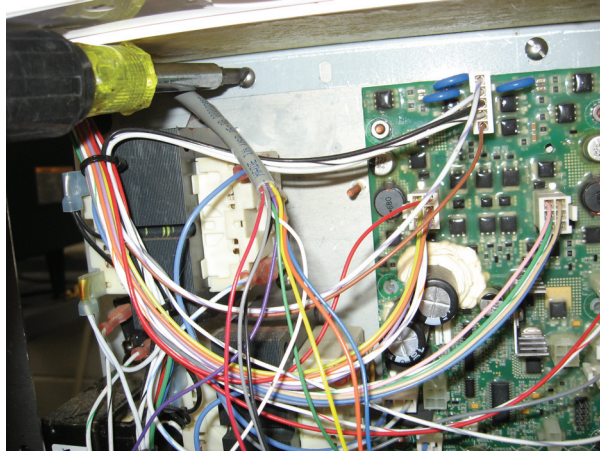
- Loosen the screws (4) holding cabinet to the left and right horizontal braces.



- Remove screws (4) that hold the stainless door wrap to the left and right front frame.



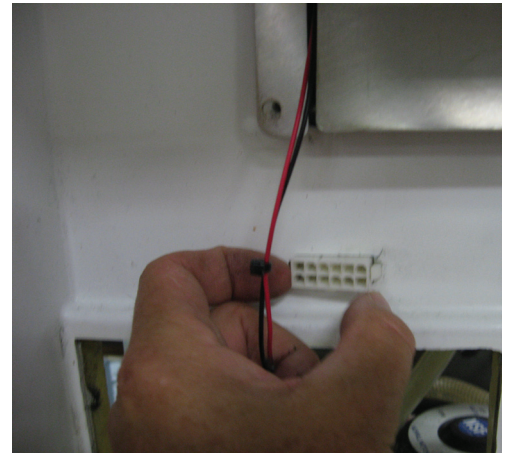
- Remove the 2 screws that connect the circuit board bracket to the cabinet frame.



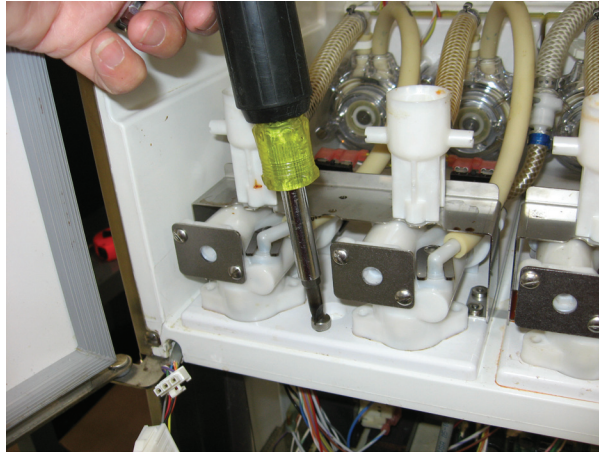
- Disconnect hoses from the coil in and coil out located behind the cabinet.



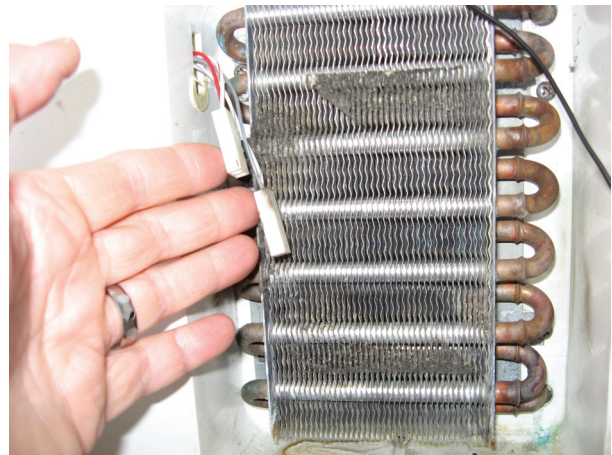
- Open cabinet door and disconnect the water line coming into the back of the cabinet at the tee and remove line through the back of cabinet. Disconnect the motor harnesses located in the back of the cabinet. Push the connector through the back of the cabinet.



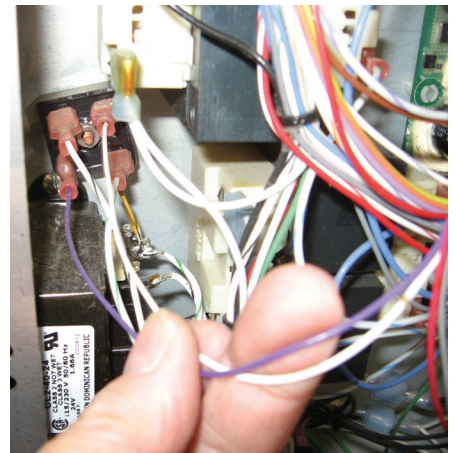
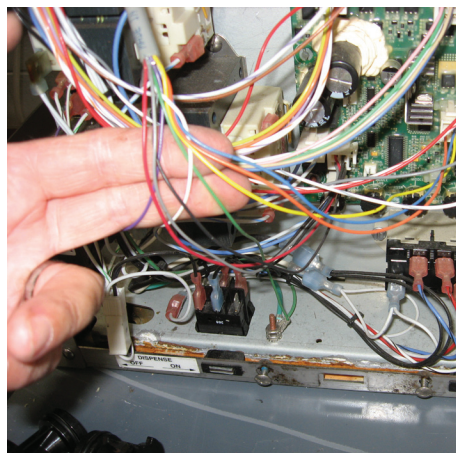
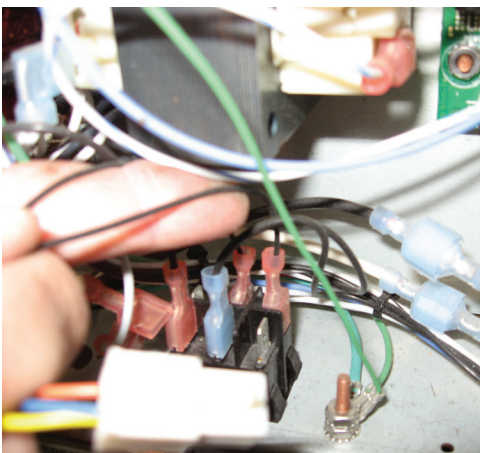
- Take out the thumbscrews located at the front of each platform. Remove the dispense platforms from the cabinet and set aside.



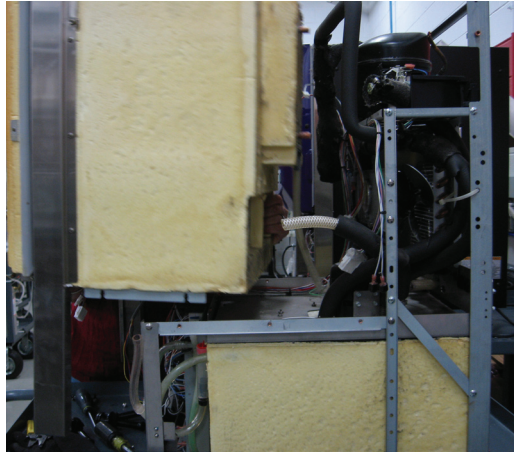
- Remove the 4 screws that hold the fan assembly and cover, then lay the assembly aside. Disconnect the wire harness from the cabinet fan and temperature probe. Push harness through the hole that is located to the left of the cabinet coils.



- Disconnect all door harness wires that go to various locations including the circuit board, dispense switch, ground, and rectifier (if applicable).

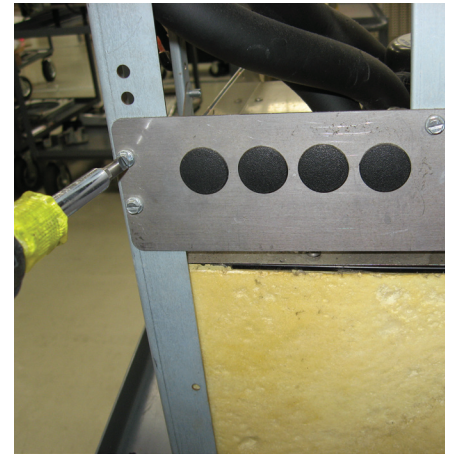


- Carefully lift the cabinet off of the frame and lay aside.

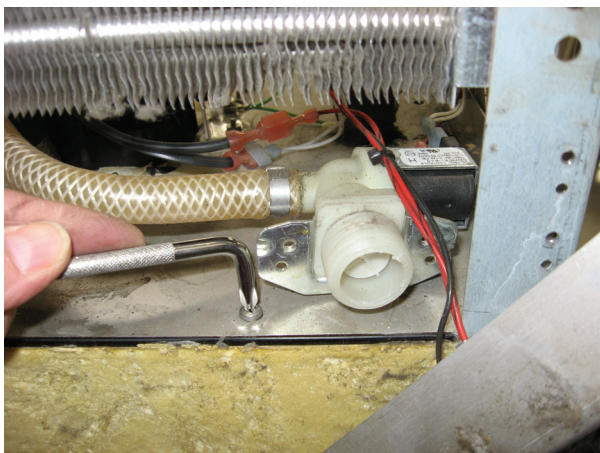


Step 5: Separate the water tank lid from the foamed bath.

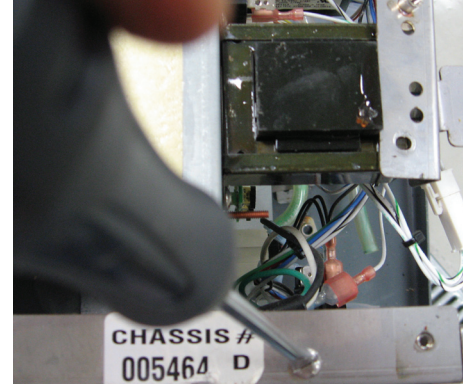
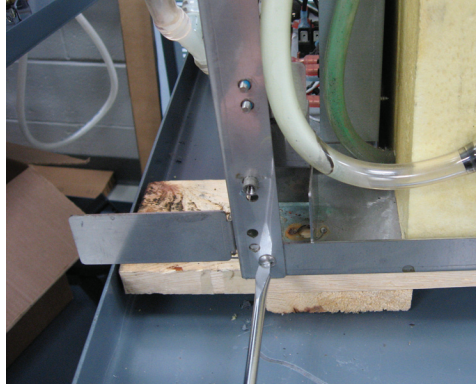
- To remove the screws at the back of the lid, remove the water inlet valve from bracket and then remove the bracket from the frame.



- Remove screws around perimeter on top of the water tank. Remove the temperature probe from top of the tank and set aside.



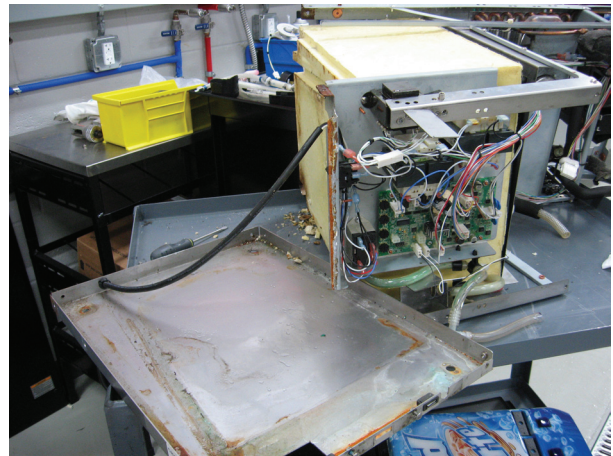
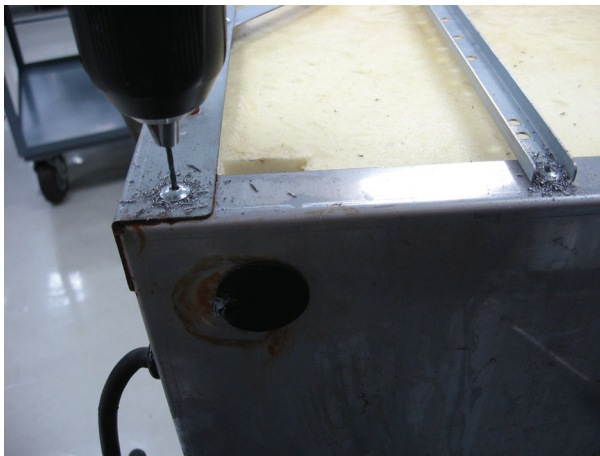
Step 6: Drill out the 2 rivets in the base frame on the bottom right side and 2 rivets in back using ¼ inch drill bit. Remove all screws on the front that hold the base to the frame. Also remove the screw on the left side of unit that holds the circuit board housing in place.



Step 7: Carefully lay the unit on its right side being careful not to damage the circuit board and housing.

Note: Do not lay the unit on left side.

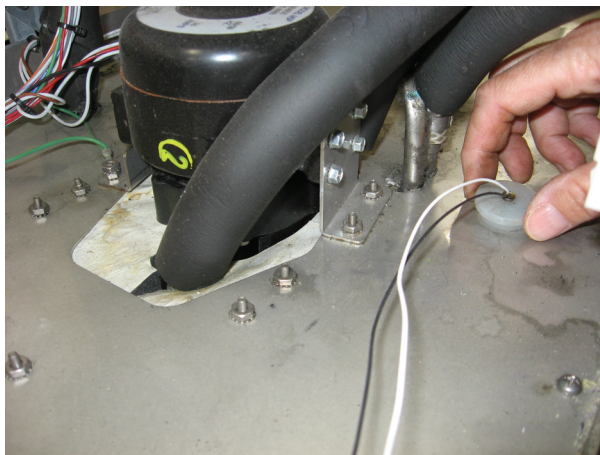
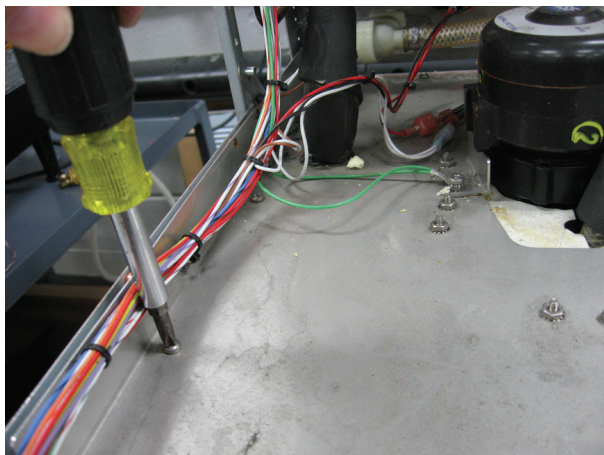
- Drill out the 2 left bottom rivets with ¼ inch drill bit. Carefully remove the bottom plate from the frame and move aside. The cord can be removed if preferred.



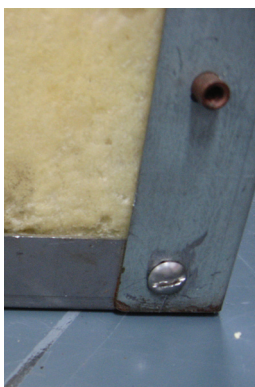
Step 8: Pull the old water tank out from the bottom of the unit. Replace water bath with a new one.



Step 9: Stand unit back up and screw top back onto water tank. Replace temperature probe.



Step 10: Replace the rivets with screws and nuts. Re-attach bottom plate to frame with screws. Re-attach circuit board mount to the left side of the base plate. Screw inlet water valve to bracket and re-attach bracket to frame.



Step 11: Place cabinet back onto frame and attach all screws. Screw the top of the board housing onto the cabinet bracket. Reconnect the door harness to its original locations.



Step 12: Connect the cabinet coil hoses (in and out) to the corresponding locations and tighten worm gear clamps. Re-attach left and right motor connectors from the main harness into cabinet slots. Route the fan and cabinet thermistor harnesses into left back slot of cabinet and reconnect. Attach the fan plate.

Step 13: Install dispense platforms and connect wire harnesses. Run the water inlet tubing through the back of the cabinet and re-attach to the tee using a clamp.

Step 14: Connect door harness to proper locations as before.

Step 15: Refill water tank per directions. Replace side panels and front splash panel.

Note - Do not run unit for 24 hours after unit has been on its side.