

INTRODUCTION

WARNING - The brewer must be disconnected from the power and water sources until installation is completed. Allow brewer to cool.

This instruction covers the installation of a new Inlet Water Solenoid Valve on any CDBC or Axiom series single or Twin brewer.

KIT CONTENTS

1. 1 Valve Assy.
2. 1 Elbow, .44 Cprsn X .75 Hose Thd
3. 1 Bracket
4. 2 Screws
5. 1 Instructions

TOOLS REQUIRED

Screwdriver
Wrenches

INSTRUCTIONS

Refer to illustration.

1. Remove front access panel.
2. Clamp tank fill hose before removing from valve!
3. Disconnect compression fitting and remove two screws securing old inlet solenoid.
4. Secure new bracket with one of the screws removed in step two. Refer to FIG 2 for bracket orientation.
5. Secure new solenoid to bracket with two screws from kit.

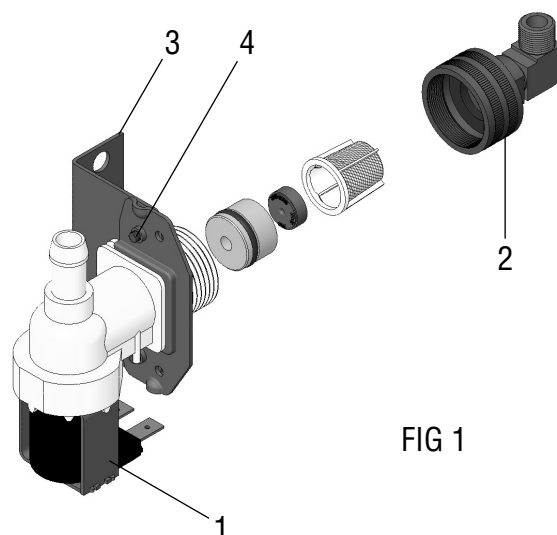


FIG 1

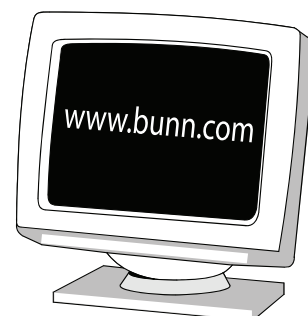
CONTINUED

BUNN-O-MATIC CORPORATION

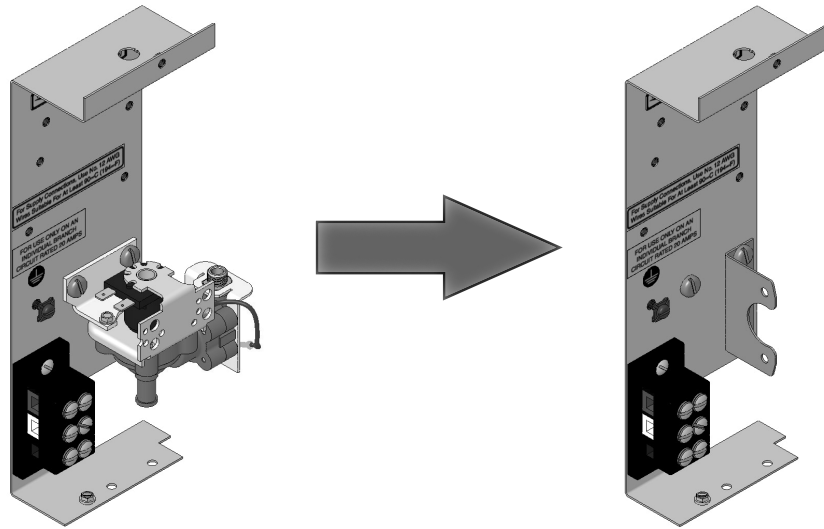
POST OFFICE BOX 3227

SPRINGFIELD, ILLINOIS 62708-3227

PHONE: (217) 529-6601 FAX: (217) 529-6644



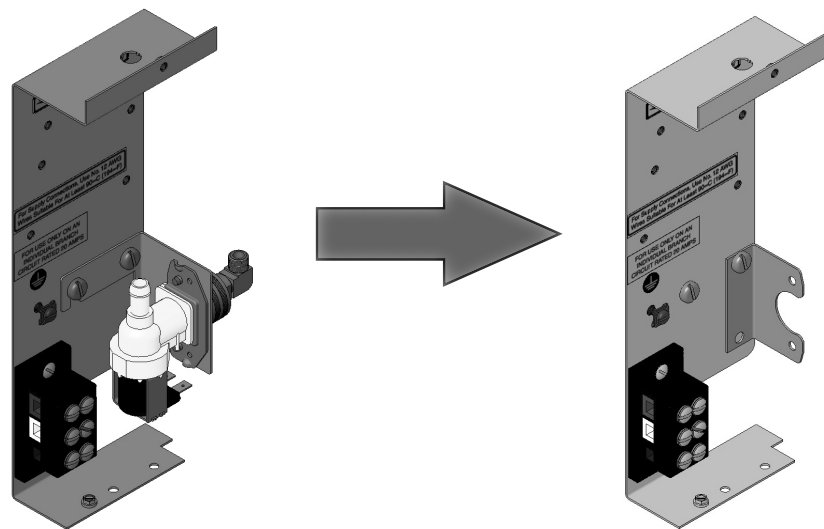
6. Attach the new elbow fitting on the new solenoid as shown.
7. Install tank fill hose and clamp onto new valve. Loosen hose shutoff clamp.
8. Bend copper tube as needed to align with new solenoid, and secure compression fitting.
9. Connect brewer to water supply and check for leaks.
10. Replace the front access panel. Connect to power source. Installation is completed.



If you're replacing this type:

Flip the new bracket to the left

FIG 2



If you're replacing this type:

Flip the new bracket to the right